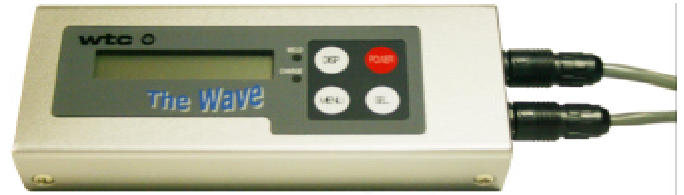




The Wave

The Wave is a new concept in weld current monitors:

- Compact
- Wireless (Bluetooth™) Connectivity
- USB Interface
- PC Data Collection and Analysis

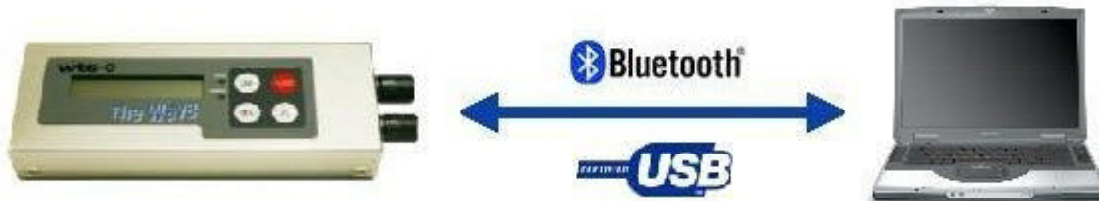


Features

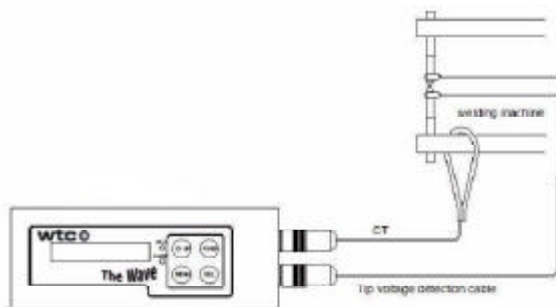
- Measures AC, MFDC Inverter, AC Inverter weld current, voltage and time
- Selectable time measurement: cycle or msec.
- Automatic collection and storage of 10,000 weld data-points
- Anytime data monitoring
- Durable and Flexible current coil and voltage leads



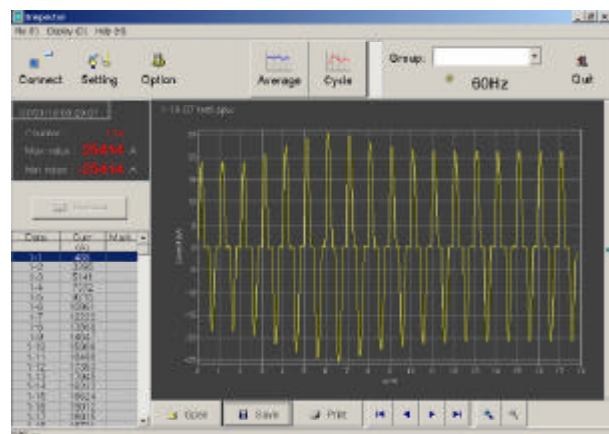
6" Diameter Current Coil



PC Connectivity Via Bluetooth or USB Interface



Typical Hook-up Example



"Inspector" PC Data Analysis Software



